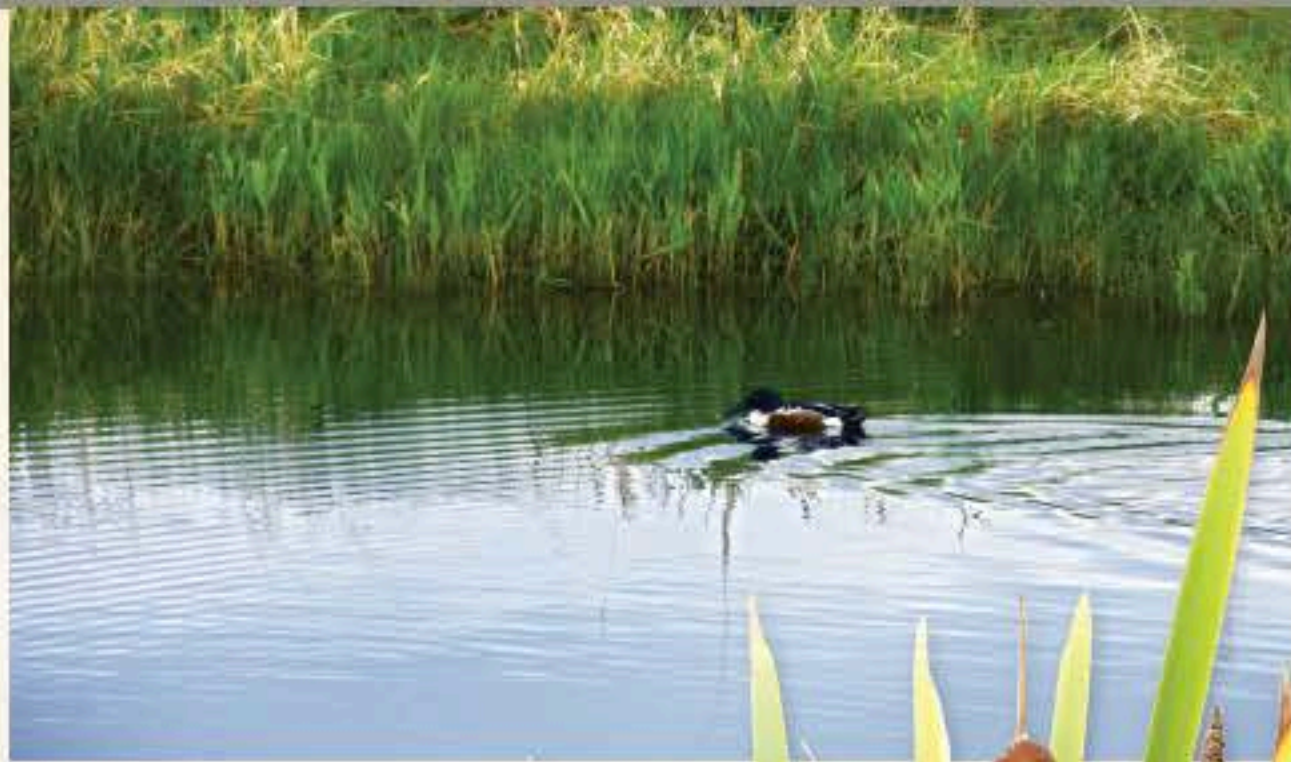


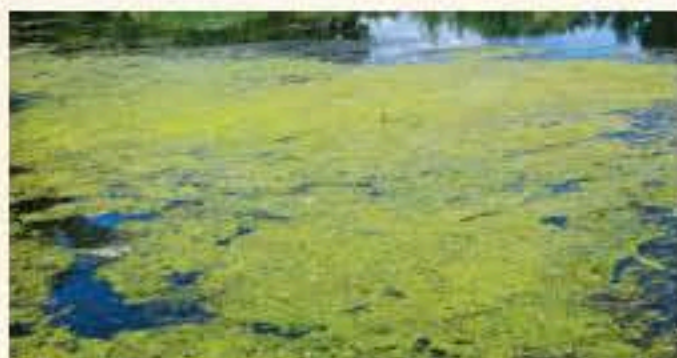


Water Treatment and the Wetlands

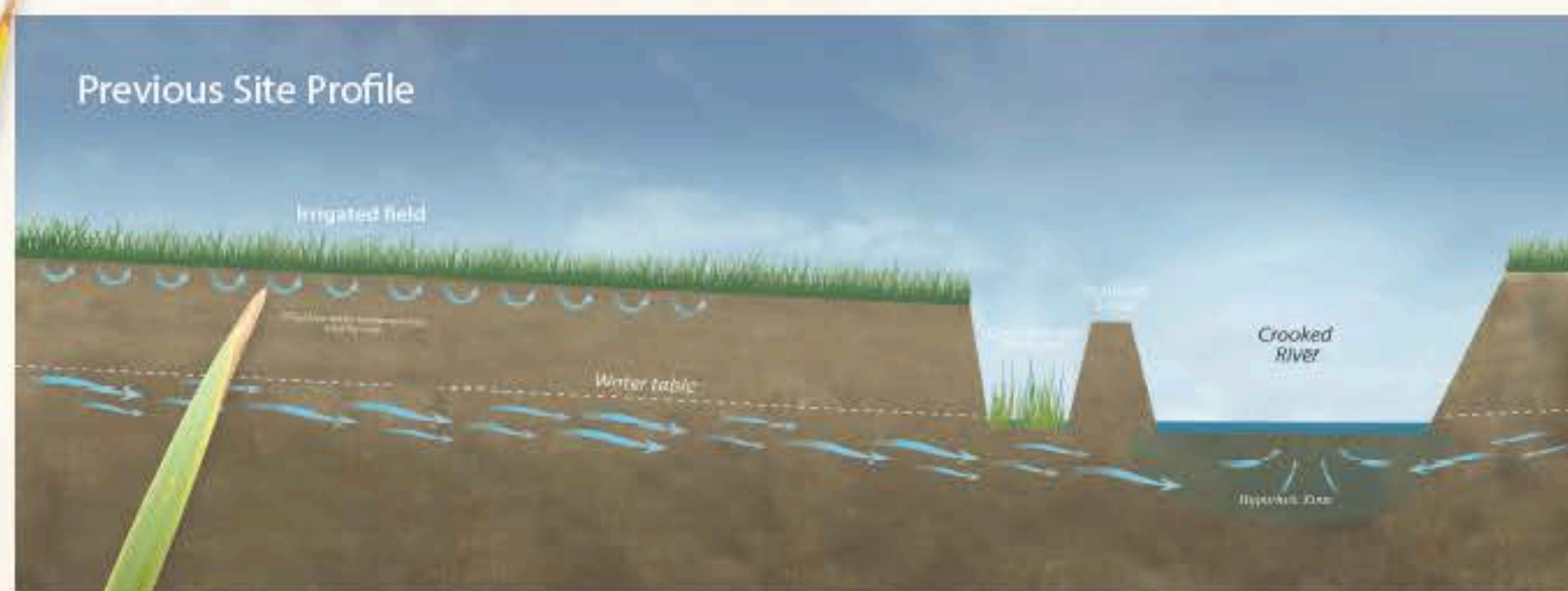
Let nature lead the way



When the city of Prineville needed to expand its wastewater capacity to meet the demands of a growing population, estimates showed a new mechanical treatment plant would cost \$62 million, need a lot of electricity and use chemicals in order to work. City staff researched a more environmentally friendly option that would save about \$55 million while creating a 120-acre series of wetlands to naturally filter the water on its way to the Crooked River. This progressive solution attracted \$3 million in additional grants while it expanded the City's wastewater capacity, stabilized sewage rates, created five miles of new public hiking trails and improved the overall health of the Crooked River.

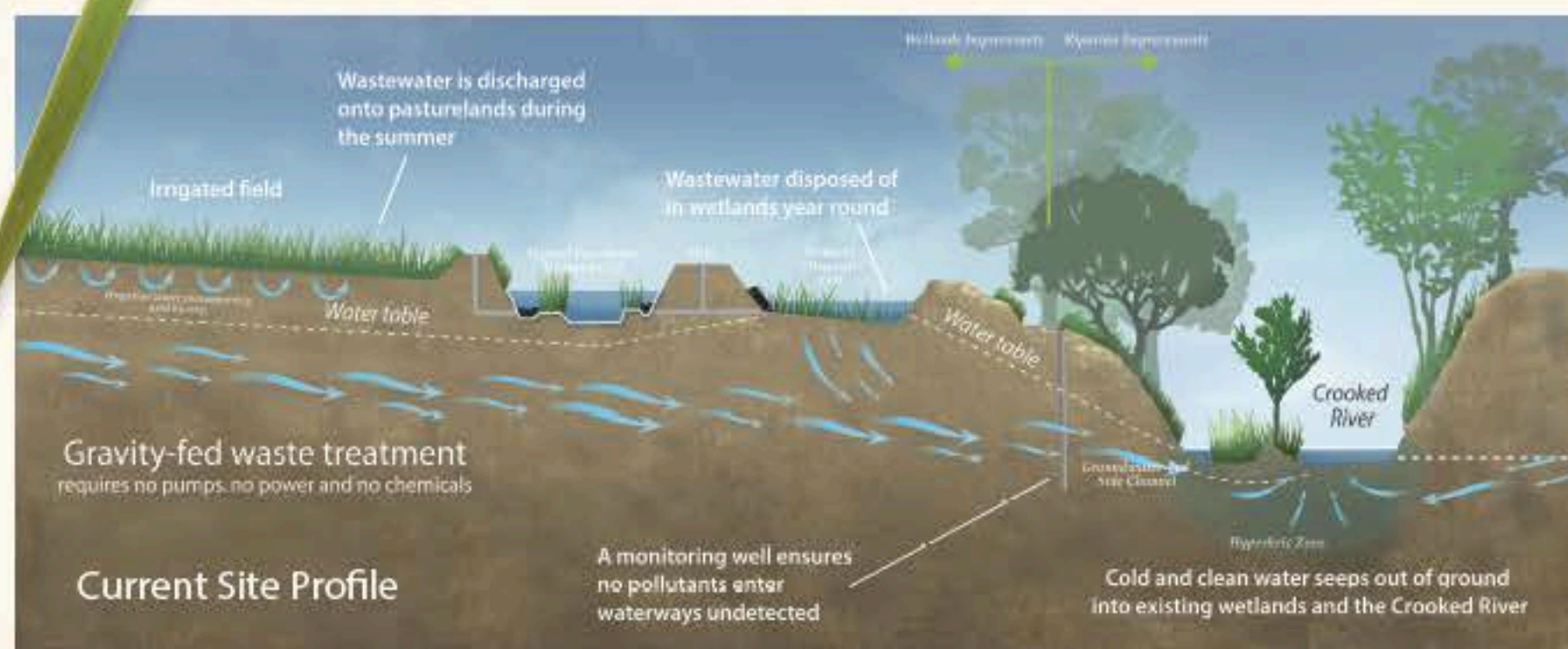


Instead of adding chemicals or using expensive mechanical systems running on electricity, plants and algae growing in the water are part of a complex world of microscopic organisms that clean the water naturally.



Here at Crooked River Wetlands Complex, Mother Nature and gravity are hard at work turning wastewater back to cold, clean water. Wetlands naturally filter pollutants out of surface water with plants such as cattails and reeds while creating ecosystems that benefits birds and other wildlife. Dikes separate the series of wetland cells.

Through careful design, the wetlands allow water to pass through the soils to filter and cool the water before emptying back into the Crooked River, giving fish ideal conditions for spawning and creating a better habitat for us and the birds and animals who call this home.



Thanks to:

If not for the foresight of the City of Prineville Council, this project would never have been created.

Council Members 4/21/2017

Betty Rapp
Gail Merritt
Jack Seely
Jason Beebe

Steve Liffman
Teresa Rodriguez
Jeff Pappas

Prior Councilors associated with the project

Jason Carr
Gordon Gillespie
Mike Wanda

Dean Hayes
Jim MacDonald

Find out more

<http://www.cityofprineville.com/publicworks/page/wetlands-timeline>

