

CITY OF PRINEVILLE
ORDINANCE NO. 1100

AN ORDINANCE AMENDING THE PRINEVILLE URBAN GROWTH BOUNDARY
AND COMPREHENSIVE PLAN BY EXPANDING SAID UGB TO INCLUDE CERTAIN
PROPERTIES LOCATED IN THE CITY-COUNTY AIRPORT DEVELOPMENT AREA;
DESIGNATING SUCH PROPERTIES FOR INDUSTRIAL USE;
AND DECLARING AN EMERGENCY

The people of the City of Prineville, Oregon, ordain as follows:

1. There is a critical need to facilitate and support community economic development efforts to provide for the development of new businesses and industry to replace job losses due to cutbacks in the area's primary industries.

2. The properties to be included within the City's UGB have previously been identified and designated as one of the County's industrial development areas and a number of firms are currently committed to developing in that area, but the area lacks vital urban services, including sewer and water, to facilitate and support such development. In fact, the subject properties have such urban services immediately available, but said services cannot be connected due to the location outside the UGB.

3. Inclusion within the City's UGB and annexation to the City is necessary for the extension and/or connection of required urban services thereto.

4. The Crook County Planning Commission and the City Planning Commission have both recommended that the City UGB be expanded to include the subject properties described in the attached "Exhibit A" and as shown on the map attached as "Exhibit B".

5. Therefore, the properties so described in the attached "Exhibit A" and as shown on the map attached as "Exhibit B" are hereby made a part of the City of Prineville Urban Growth Area, and the City Urban Growth Boundary is hereby expanded to encompass said properties. Said properties shall be designated for industrial use in the urban area Comprehensive Plan and shall be zoned for industrial use.

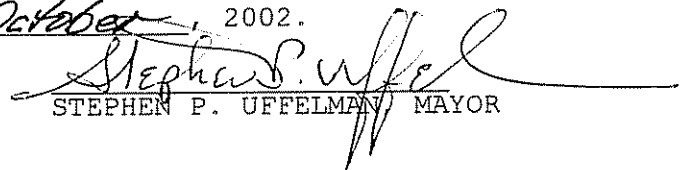
6. And, Whereas the City has identified a critical public need for such UGB expansion for the creation of new jobs for the community, and has found that such expansion is in the best interests of the community's general welfare and needs to be expedited to meet private development needs and schedules, an emergency is hereby declared and this Ordinance shall be in full force and effect upon its approval by the City Council and the Mayor.

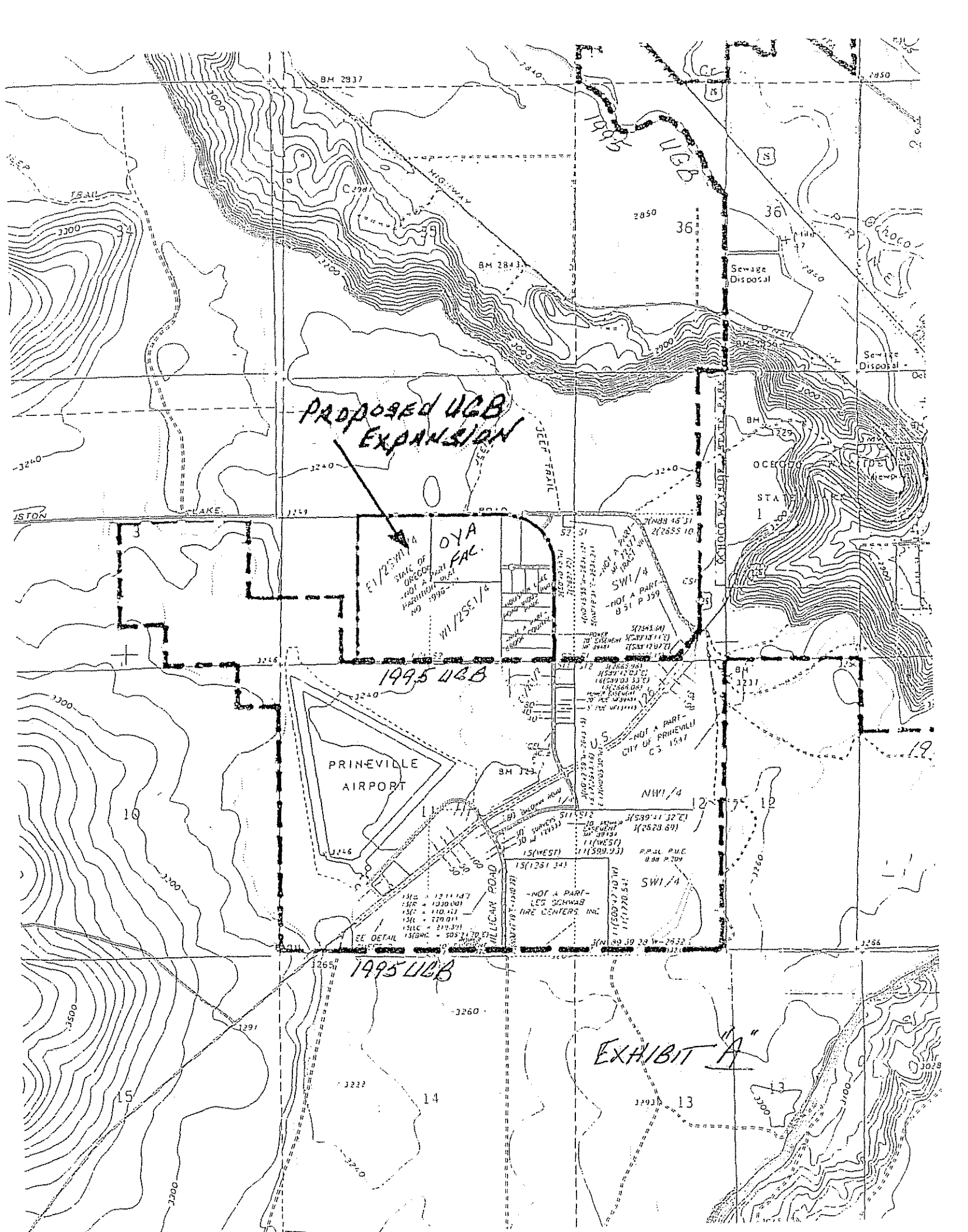
APPROVED BY THE CITY COUNCIL ON THE 30th DAY OF October, 2002.

APPROVED BY THE MAYOR ON THE 30th DAY OF October, 2002.

ATTEST:


HENRY HARTLEY, CITY MGR/RECORDER
DATE: 10/24/02


STEPHEN P. UFFELMAN, MAYOR



PROPOSED UGB EXPANSION

EV/2SW/4
STATE OF OREGON
NOT A PART
PARISHAM & CO
NO 1995

OYA FAC.

1995 UGB

PRINEVILLE AIRPORT

1995 UGB

EXHIBIT A

EE DETAIL
151C = 1211.187
151B = 1310.001
151E = 110.143
151I = 720.011
151L = 219.371
151M = 505.170

-NOT A PART-
LES SCHWAB
FIRE CENTERS, INC.

SWI/4
P.P.L. P.L.C.
B.M. P. 209

SWI/4
11(589.93)
11(589.93)

SWI/4
11(589.93)
11(589.93)

SWI/4
11(589.93)
11(589.93)

SWI/4
11(589.93)
11(589.93)

SWI/4
11(589.93)
11(589.93)

SWI/4
11(589.93)
11(589.93)

SWI/4
11(589.93)
11(589.93)

SWI/4
11(589.93)
11(589.93)

SWI/4
11(589.93)
11(589.93)

SWI/4
11(589.93)
11(589.93)

SWI/4
11(589.93)
11(589.93)

SWI/4
11(589.93)
11(589.93)

SWI/4
11(589.93)
11(589.93)

SWI/4
11(589.93)
11(589.93)

SWI/4
11(589.93)
11(589.93)

SWI/4
11(589.93)
11(589.93)

SWI/4
11(589.93)
11(589.93)

SWI/4
11(589.93)
11(589.93)

SWI/4
11(589.93)
11(589.93)

SWI/4
11(589.93)
11(589.93)

SWI/4
11(589.93)
11(589.93)

SWI/4
11(589.93)
11(589.93)

SWI/4
11(589.93)
11(589.93)

SWI/4
11(589.93)
11(589.93)

SWI/4
11(589.93)
11(589.93)

SWI/4
11(589.93)
11(589.93)

SWI/4
11(589.93)
11(589.93)

SWI/4
11(589.93)
11(589.93)

SWI/4
11(589.93)
11(589.93)

SWI/4
11(589.93)
11(589.93)

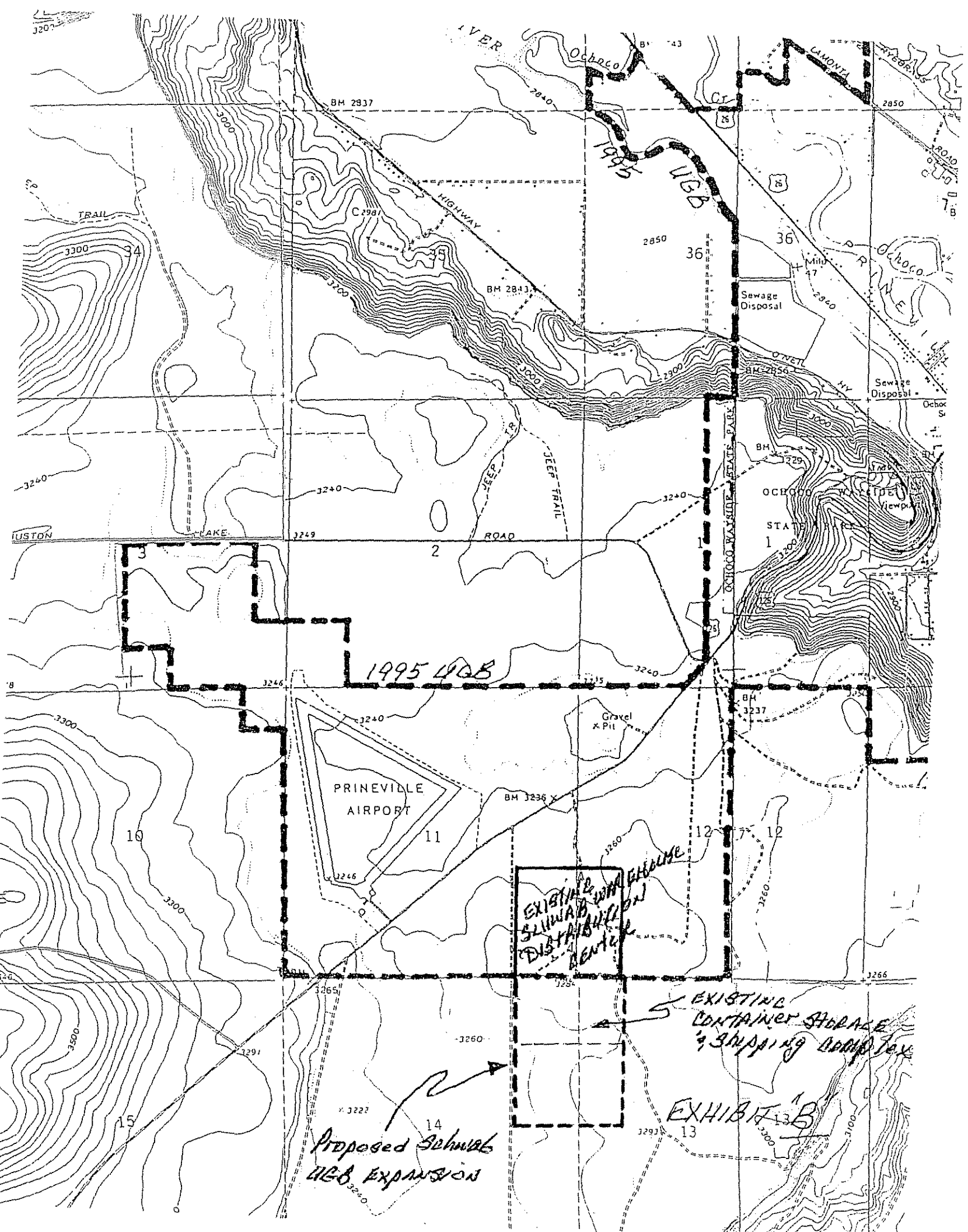
SWI/4
11(589.93)
11(589.93)

SWI/4
11(589.93)
11(589.93)

SWI/4
11(589.93)
11(589.93)

SWI/4
11(589.93)
11(589.93)

SWI/4
11(589.93)
11(589.93)



1995 UGB

PRINEVILLE AIRPORT

EXISTING SCHWAB DISTRIBUTION CENTER

EXISTING CONTAINER STORAGE & SHIPPING COMPANY

EXHIBIT 13B

Proposed Schwab UGB Expansion

