

RESOLUTION NO. 1368

A RESOLUTION AUTHORIZING THE CITY MANAGER OF THE CITY OF PRINEVILLE TO EXECUTE A MUNICIPAL LEASE AGREEMENT WITH US BANK EQUIPMENT FINANCE FOR AN AMOUNT NOT TO EXCEED \$86,544.00 AND A REPAYMENT TERM OF NO MORE THAN FIVE YEARS TO FUND A SELF-PROPELLED BOOM AND TRAILER

Whereas, the City Council of the City of Prineville (“City”) adopted its fiscal year 2018-19 budget, which included lease payments for the purchase of a self-propelled boom and trailer; and

Whereas, The City’s fiscal year 2018-19 budget includes lease payments based on a five-year amortization schedule; and

Whereas, the City has through a cooperative procurement process allowable under City Resolution 1266 elected to purchase a self-propelled boom through Zuma Sales, LLC, and trailer through Trailer World-Bend, and enter into a municipal lease financed through US Bank Equipment Finance; and

Whereas, City staff believes it is in the best interest of the City to approve and execute the Agreement;

Now, therefore, the City of Prineville Resolves as follows:

1. The City Manager is authorized to execute appropriate and necessary loan documents with US Bank to secure a municipal lease in an amount not to exceed \$86,544.00 to fund a self-propelled boom and trailer.
2. The loan will be repaid in six payments of \$14,424.00.
3. This Resolution is effective upon passage.

Passed by the City Council this ____ day of August, 2018.

Betty J. Roppe, Mayor

ATTEST:

Lisa Morgan, City Recorder



City of Prineville

387 NE THIRD STREET ♦ PRINEVILLE, OREGON 97754

INFORMATION TECHNOLOGY

p: (541) 447-2374 f: (541) 447-2375 e: support@cityofprineville.com

August 23, 2018

Resolution 1368

Staff Report

Included in the FY 19 budget, the IT department included funding to lease an elevated work platform. This piece of equipment is used extensively when working at height to align security cameras, setup microwave infrastructure at the City's radio sites, install and maintain public safety radio systems, and a variety of other projects.

In the past, the department has rented this equipment when needed, however, it has become more difficult to find rental availability and the frequency of use is increasing. With the projects currently scheduled, the IT department has in excess of 45 days of use planned over the next 16 months, and that trend is expected to continue.

The break-even point between renting and leasing this piece of equipment is approximately 28 days of use. This cost comparison does not include the staff time expended for picking up a rental unit from the Central Oregon area and transferring it to the worksite. Additionally, tower work that can be performed from an aerial work platform instead of by a climbing crew reduces the personnel required to perform the task from a 3 person crew to a 2 person crew. This will realize additional staff time and contract personnel savings, making this a fiscally sound acquisition for the City in several ways, while increasing productivity.

The city will utilize a cooperative purchase agreement to satisfy procurement process for this item. Annual equipment lease cost is in the amount of \$14,424.00 which is within budget for this acquisition. A cut sheet of the device is attached to this staff report. The model specified is the 55XA.

Resolution #1368 authorizes the execution of the lease agreement and staff recommends that Council approve this resolution.

LIGHT-WEIGHT SELF-PROPELLED BOOMS



45 XA - 55 XA

Access like never before

- Hydraulic outriggers and automatic leveling allow operation in under 30 seconds
- High performance 4WD and light weight provide access to places larger and heavier machines cannot go
- Easily transported on a trailer with no commercial driver's license requirement
- Dual power source (DC / Gas) allows for indoor/outdoor use

Optimum performance

- 4,500 Watt generator
- Air / water lines to platform
- 110V GFI protected power to the platform



Haulotte 
GROUP

More than lifting

www.haulotte-usa.com

(41)

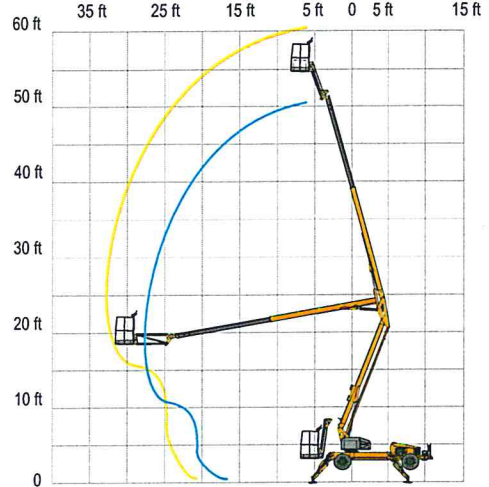


45 XA - 55 XA

LIGHT-WEIGHT SELF-PROPELLED



45 XA - 500 lb / 2x 55 XA - 500 lb / 2x



TECHNICAL DATA

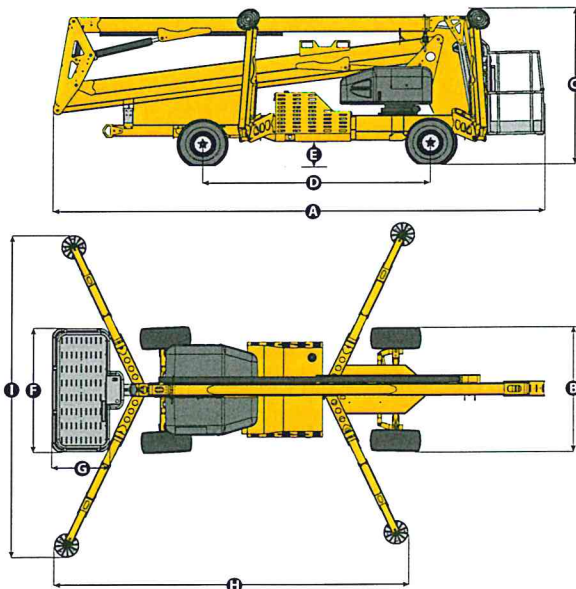
	45 XA	55 XA
Working height	51 ft	61 ft 3 in
Platform height	45 ft	55 ft 3 in
Horizontal outreach (from centerline)	27 ft	33 ft 5 in
Horizontal outreach (from edge of footpad)	21 ft	27 ft 4 in
Up and over height	20 ft 9 in	23 ft 1 in
Lift capacity	500 lb	
A - Length - stowed	18 ft 2 in	21 ft 2 in
B - Width stowed	5 ft 6 in	5 ft 8 in
C - Height stowed	6 ft 7 in	6' 9"
D - Wheelbase	8 ft 9 in	10 ft 1 in
E - Ground clearance	6 in	10 in
F x G - Platform size	5 ft x 2 ft 6 in	
H x I - Outrigger footprint	12 ft 4 in x 11 ft 4 in	13 ft 11 in x 12 ft 9 in
Turntable rotation	700° non-continuous	
Jib - length	4 ft 3 in	
Jib - Vertical motion	150° (+70 / -80)	
Drive speed	3.5 mph (max)	5 mph (max)
Gradeability	45%	
Turning radius - inside (2WS)	12 ft 6 in	11 ft
Turning radius - inside (4WS)	N/A	6 ft 10 in
Tire size	26 x 12 Bar lug	
Batteries	4 x 6V 245 Amp-hr	
Engine	22 hp gas Kawasaki	31 hp gas Kubota OR 24 hp diesel Kubota
Weight	4,900 lb	6,000 lb

STANDARD EQUIPMENT

- Hydraulic outriggers
- Automatic leveling system
- Self-leveling platform
- Air and water lines to platform
- 110V GFI protected outlet to platform and base
- 4,500 W generator
- Hour meter
- Battery condition indicator
- Dual power system
- Easy to use controls with logically positioned buttons
- Tilt alarm / sensor
- Spring applied hydraulic released brakes
- Inboard 24 amp charger
- Bar lug tires
- 4-Wheel steering (55XA only)

OPTIONS AND ACCESSORIES

- Material lifting hook
- Manual platform rotator (45XA only)
- Flashing beacon
- Flourescent tube caddy
- Tool tray
- Turf tires (45XA ONLY)
- Dual fuel - 31 HP gas / liquid propane Kubota (55XA ONLY)



(42)

